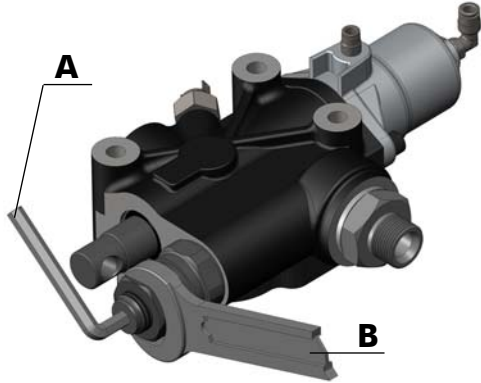


# ISTRUZIONE TARATURA VALVOLA DI MASSIMA RELIEF VALVE SETTING INSTRUCTION

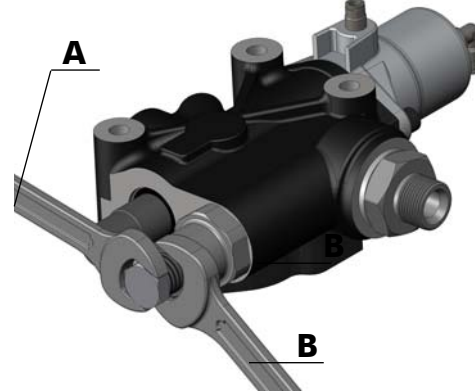
**CODICE FAMIGLIA**  
FAMILY CODE

**121-007**  
**121-008**  
**121-018**

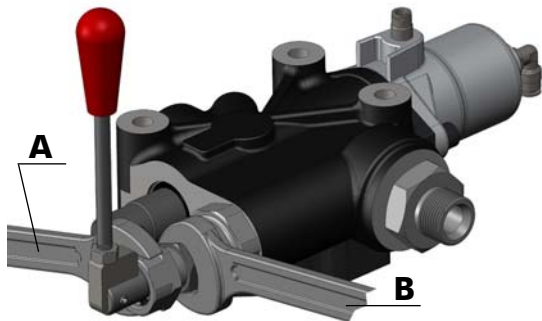
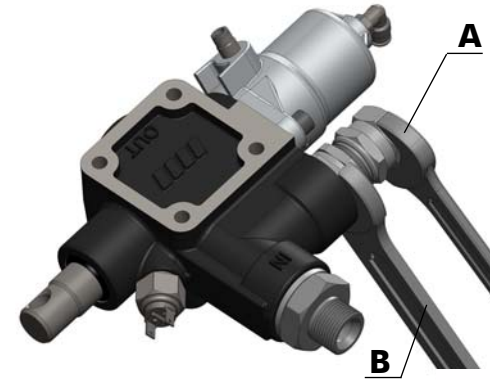
**Modular con valvola cartridge**  
*Modular with cartridge valve*



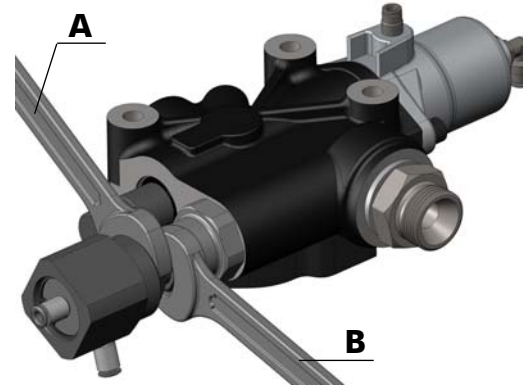
**Modular con valvola pilotata**  
*Modular with pilot valve*



**Modular con valvola diretta**  
*Modular with direct valve*



**Modular con valvola doppia/tripla  
pressione ad azionamento meccanico.**  
*Modular with double/triple pressure valve  
with manual selection.*



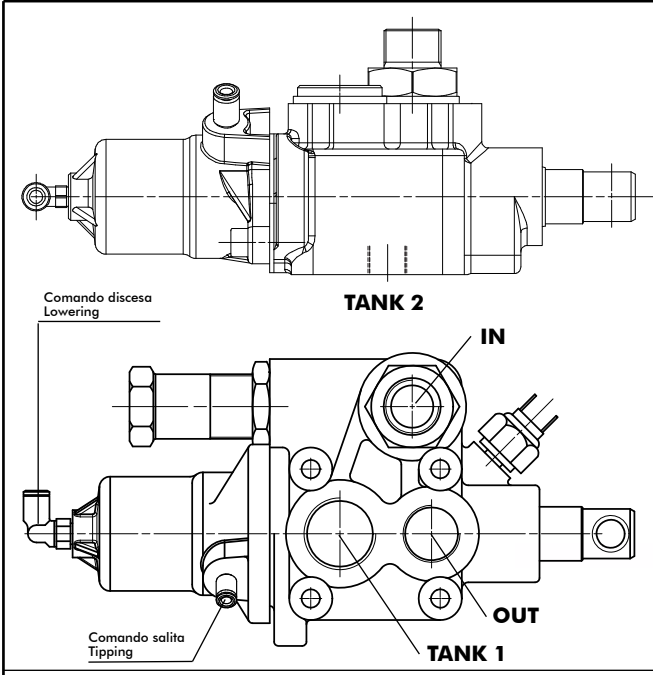
**Modular con valvola doppia/tripla  
pressione ad azionamento pneumatico.**  
*Modular with double/triple pressure valve  
with pneumatic selection.*

- 1) Svitare il part. **B** avendo cura di mantenere serrato il part. **A**.  
*Unscrew the part. **B** carefully keeping the part. **A**.*
- 2) **Avvitando** il particolare **A** la pressione aumenta.  
**Svitando** la pressione diminuisce.  
***Screw** the part. **A** the pressure increases. **Unscrew** the pressure  
decreases.*
- Controllare la pressione con un manometro.  
*Check the pressure with a pressure gauge.*
- 3) Riavvitare il part. **B** avendo cura di mantenere in posizione il part. **A**.  
*Lock the part. **B** but keeping the carefully position to part **A**.*

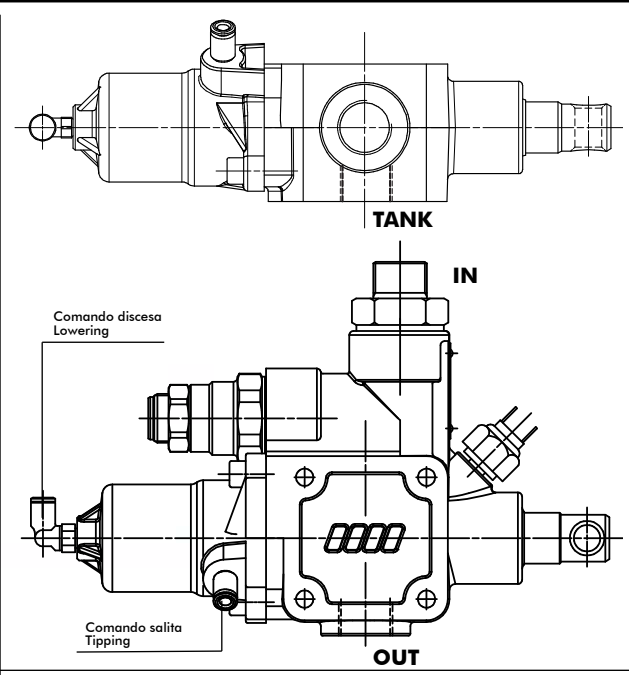
# IDENTIFICAZIONE PORTE - PORTS IDENTIFICATION

Codice foglio: 997-001-01257 Rev: AD

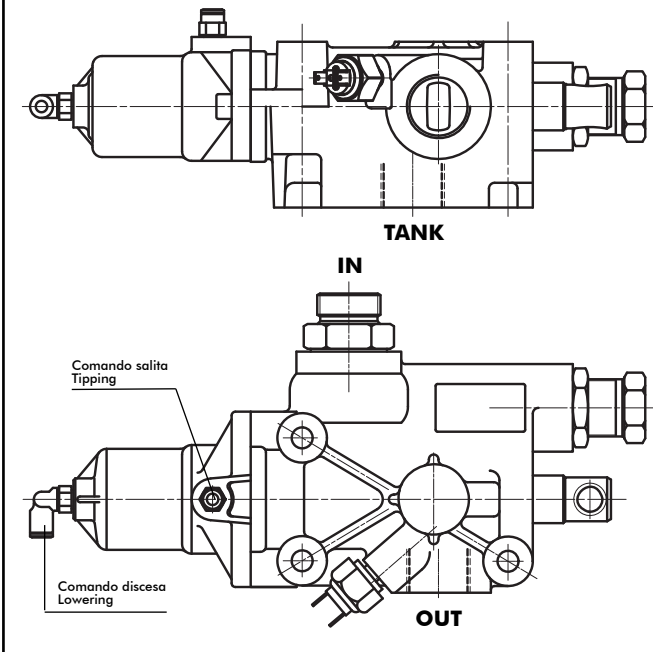
Data: Lunedì 16 dicembre 2013



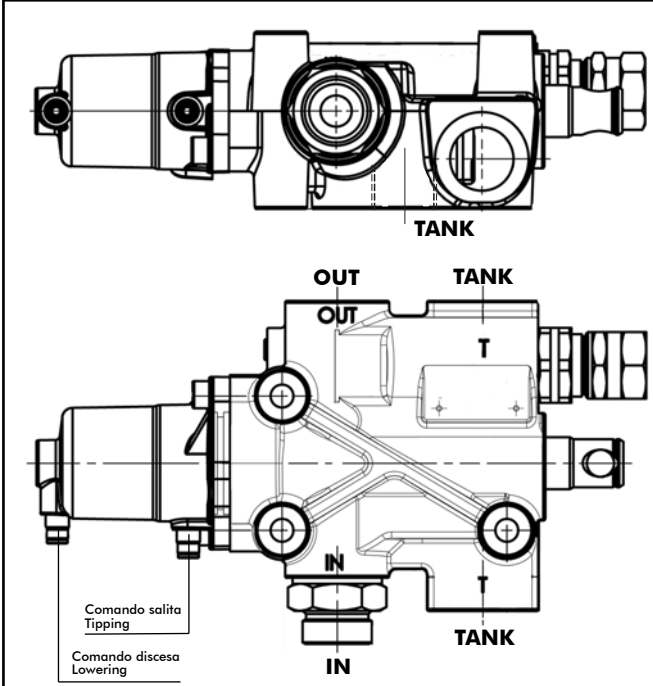
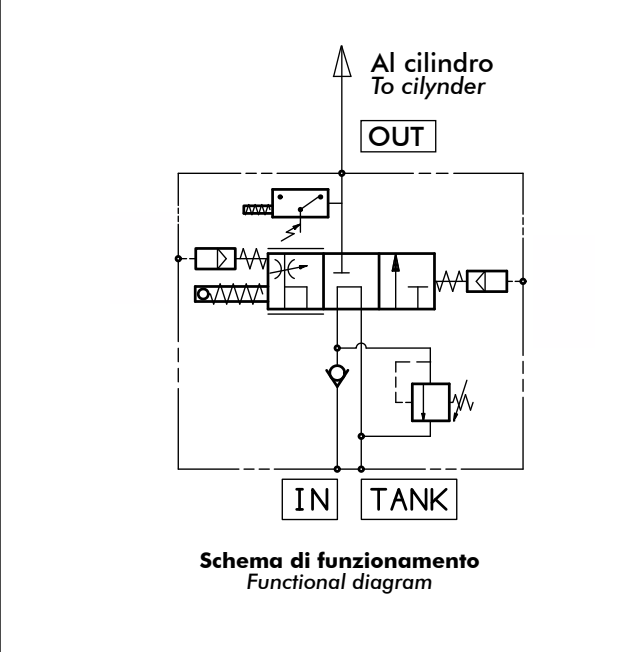
**MODULAR 150**



**MODULAR 150 A.L.**



**MODULAR 200-250**



**MODUL-TRUCK 250**

